



# *LSU Partnering with Communities Through Service-Learning*

**Jan Shoemaker**

**Director, Louisiana State University**

**Service-Learning Program**

**[Jshoema@lsu.edu](mailto:Jshoema@lsu.edu)**



*Key Question*

**How can communities connect with universities to enhance tourism?**

# *What is Service-Learning?*

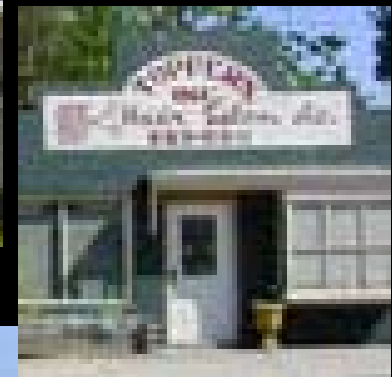


- ▶ Credit-bearing student learning experiences
- ▶ Organized service activities
- ▶ Community service goals
- ▶ University course learning goals
- ▶ Civic responsibility enhancement

# Architecture Example

- The Office of Community Design and Development

Planning project in Clinton, Louisiana includes research, data collection, physical inventory, strategic planning and master plan development.



# *Architecture Example*

## The LSU Office of Community Preservation

- resource inventories and assessments
- planning concept documents
- graphic visualizations

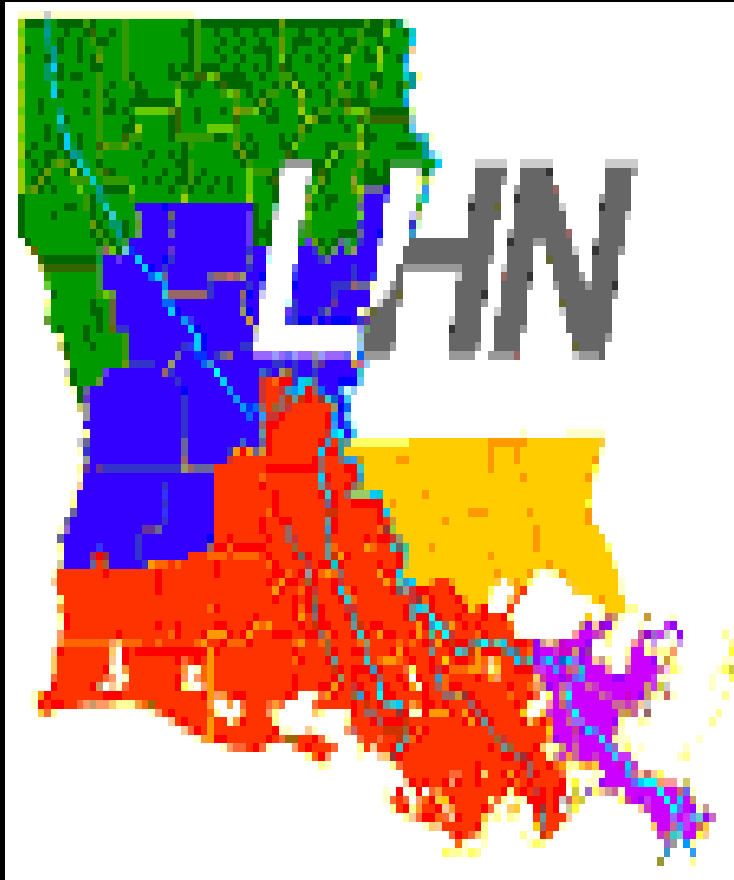
to help promote a better-informed dialogue about community assets and liabilities

# *Community Involvement*

*Architecture students get feedback from community members after creating a development plan and a web site for community organizations to facilitate community development and communication.*

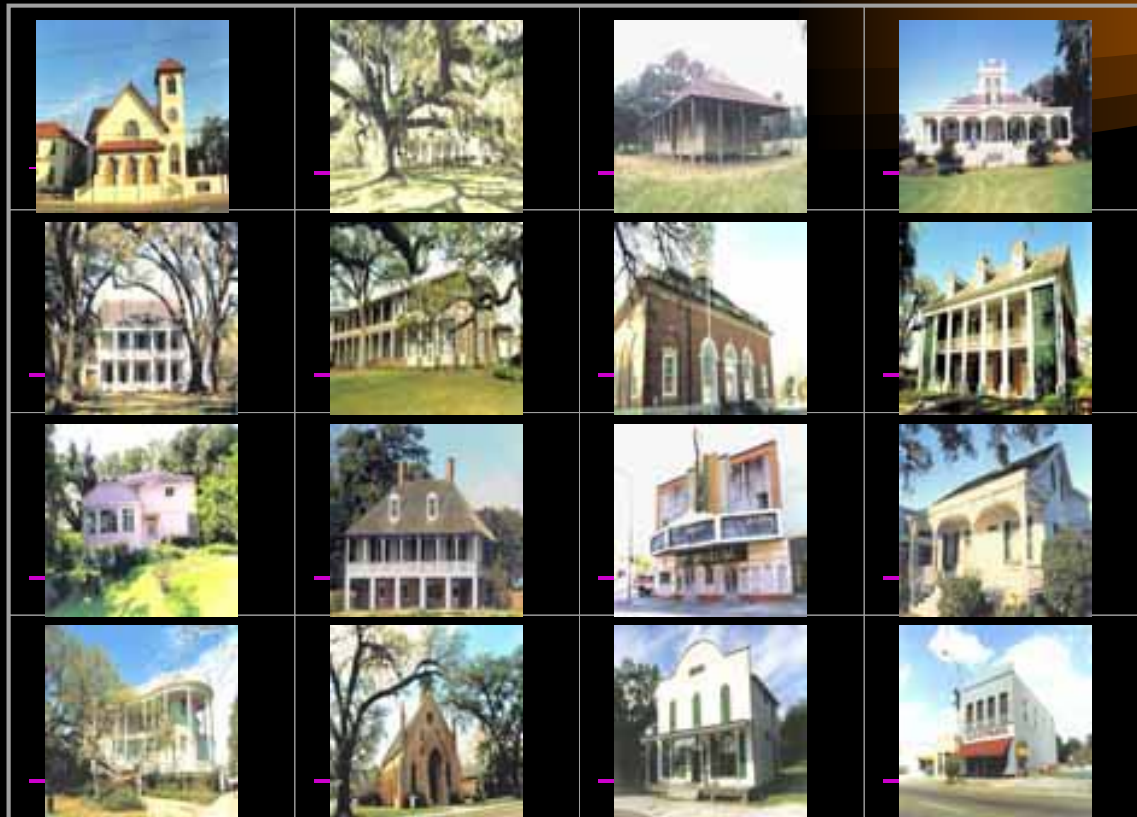


# *Louisiana Heritage Network*

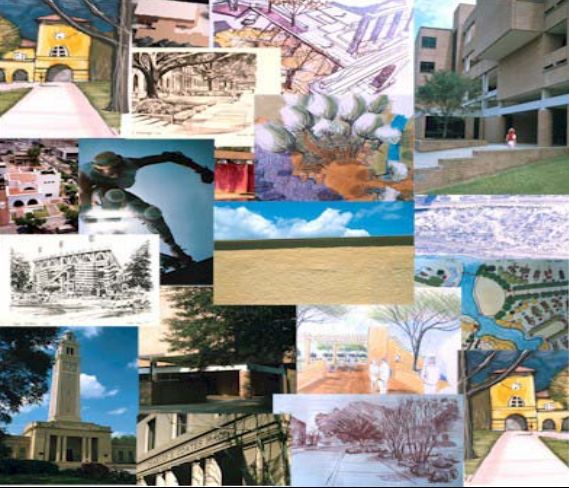


- guide to the cultural and natural heritage resources of Louisiana and the Lower Mississippi Delta Region.
- an ongoing research and community service project of the Office of Community Preservation at Louisiana State University.  
<http://LHN.lsu.edu>

# *The Louisiana Heritage Network Iberia Parish Photo Album*







# *Landscape Architecture*

- urban public spaces
- business parks
- public gardens
- management of natural parks and forests
- regional and rural landscapes
- design parks and recreational facilities
- tourism plans



# *Atchafalaya Trace Project*

Teams of landscape architecture students produced an inventory and analysis report surveying the 13-parish Atchafalaya Trace Area for the Atchafalaya Trace Commission to use in promoting tourism.

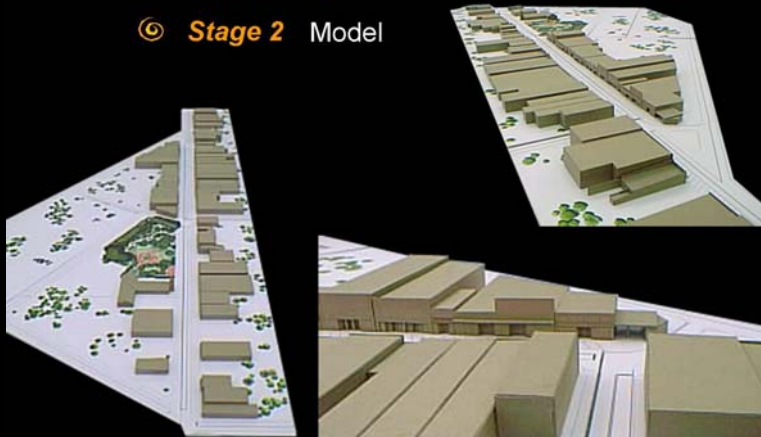


# *Interior Design*

Students partnered with City of Bogalusa and Louisiana Main Street to design and market revitalized main street plan for the city.

## **Building The Magic**

© Stage 2 Model



# Bringing Back The Magic

Landscape architecture students recreate the main street and market their plan to Bogalusa residents.



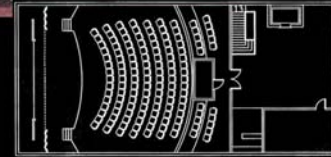
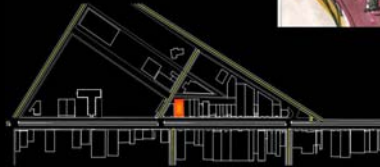


# Redwood Theater Before and After

## Bringing Back The Magic



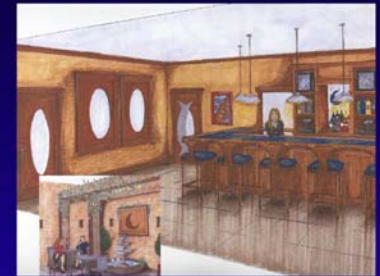
The Redwood Theater



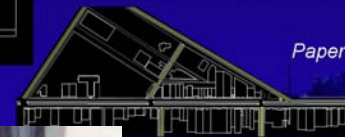
# Café Before and After



## Bringing Back The Magic



Paper Moon Cafe



# *Technical Writing example*

Technical Writing:  
Students presented their grant proposal to representatives of their agency and a potential funding foundation. The proposal won a \$50,000 grant to build a playground for the Children's Development Center.





# *Biological Engineering Example*

- Students design and construct playgrounds consistent with human and environmental constraints.





*Service-Learning Connects  
Civic and Academic Goals*



**Pure Service**

**SERVICE-LEARNING**

**Pure Learning**

# *How can I learn more?*

[www.lsu.edu](http://www.lsu.edu)

Click LSU A-Z

[www.cas.lsu.edu](http://www.cas.lsu.edu)

Click “Service-Learning”

[www.design.lsu.edu](http://www.design.lsu.edu)

<http://lhn.lsu.edu/>

Contact your local schools and  
ask for specific departments.

